

DRIVE-IN PALLET RACK



interlake
 **MECALUX**

Drive-In Pallet Rack

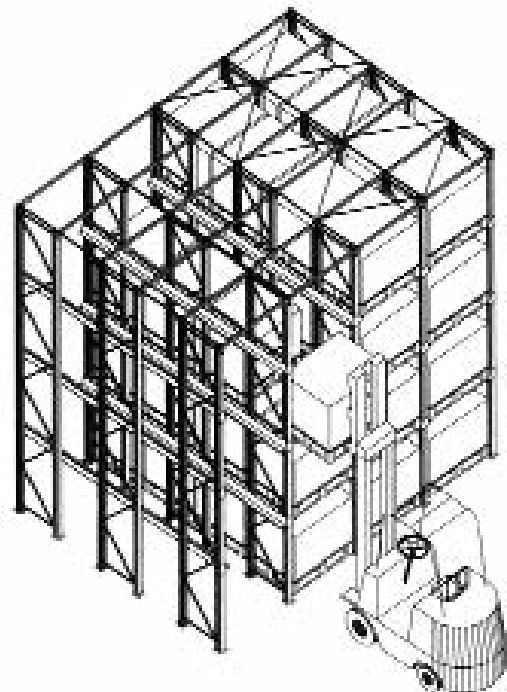


Drive-In Pallet Rack

With its minimal number of aisles, drive-in rack very dense storage and takes maximum advantage of available space, as each bay is dedicated to a single type of article. Drive-in rack is typically used when there are many of the same types products (SKUs).

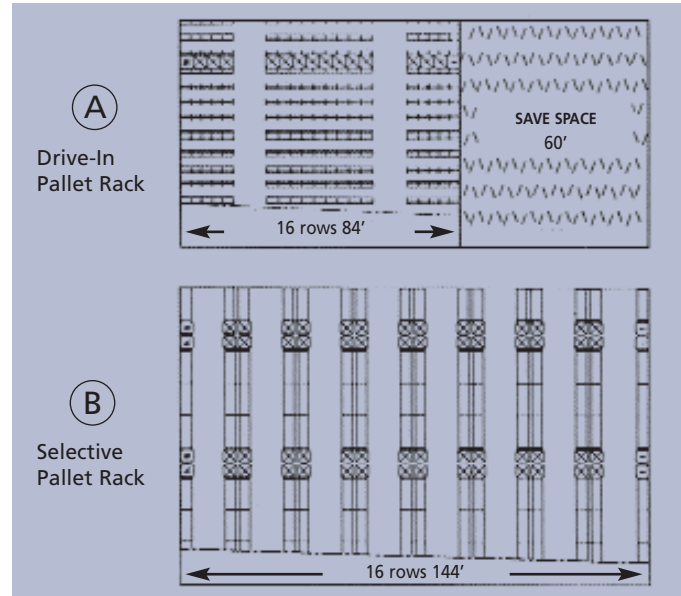
A minimum number of aisles is needed for fork lift maneuver, so that most of the available floor plan can be used for storage. It can significantly reduce the storage space compared to traditional selective pallet rack.

Our unique design of self centering load rail helps the operator "guide" the pallet into position.



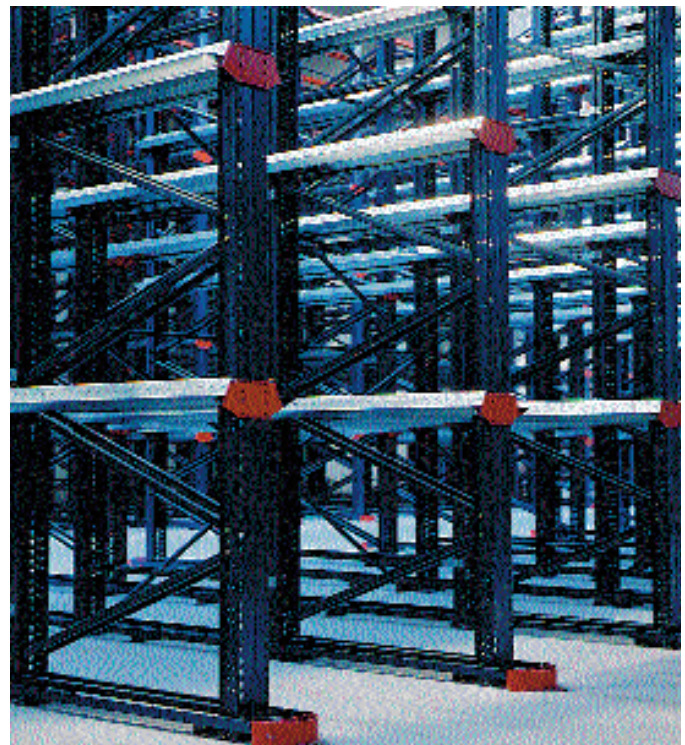
Drive-in pallet rack is made up of rows of racks which form inner loading lanes with guide rails. The forklift trucks drive along the inner lanes with their load raised above the level on which it is to be deposited.

Drive-In Pallet Rack



The benefits of Drive-in rack system (A) over Selective pallet rack (B), in terms of needed space are shown in the diagram above.

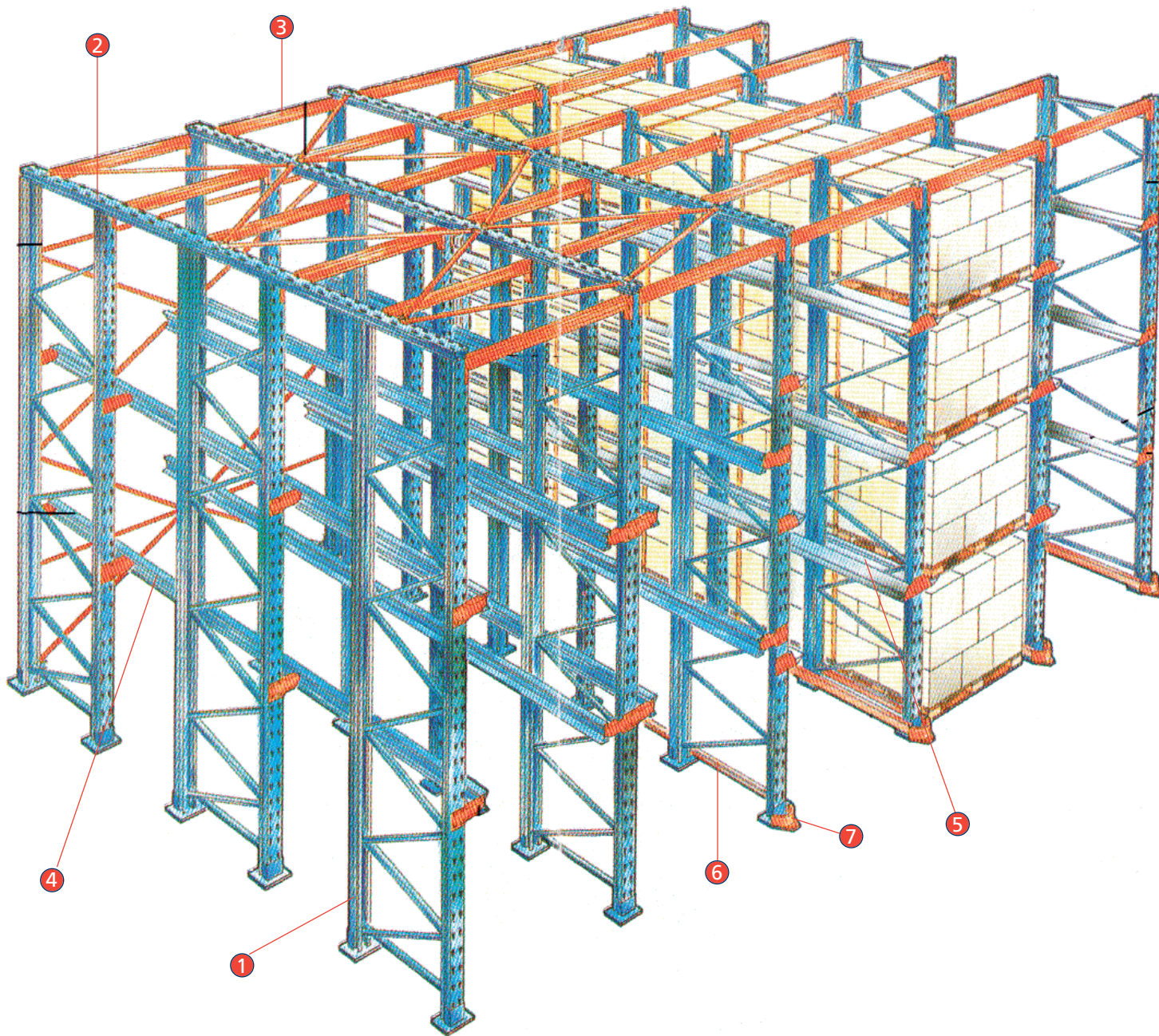
In installation A, (Drive-in system) 75% of the available floor is used for storage while with the Selective pallet rack installation, only 45% of the space is used for storage purposes.



Drive-In Pallet Rack

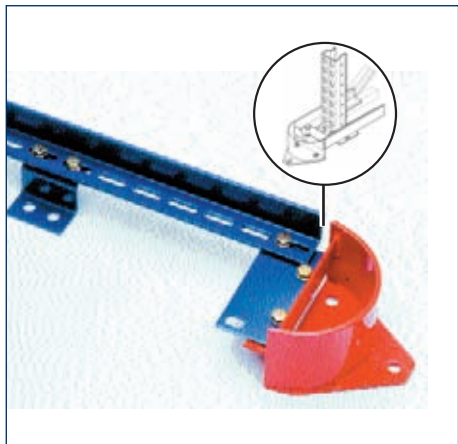


Drive-In Pallet Rack Components

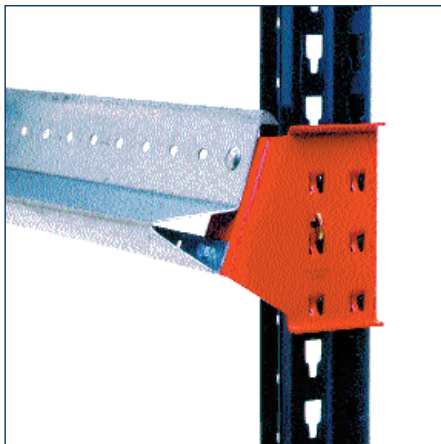


- | | |
|--------------------------|---------------------------|
| ① Frames | ⑤ Pallet Support Arm |
| ② Vertical Cross-Bracing | ⑥ Floor Guide Rail |
| ③ Horizontal Cross Rail | ⑦ End Rail Post Protector |
| ④ Pallet Support Rail | |

Drive-In Pallet Rack Components



Floor guide rail and end-rail post protectors: This is used to guide the forklift within the bays and reduce the possibility of forklift bumping into frames.

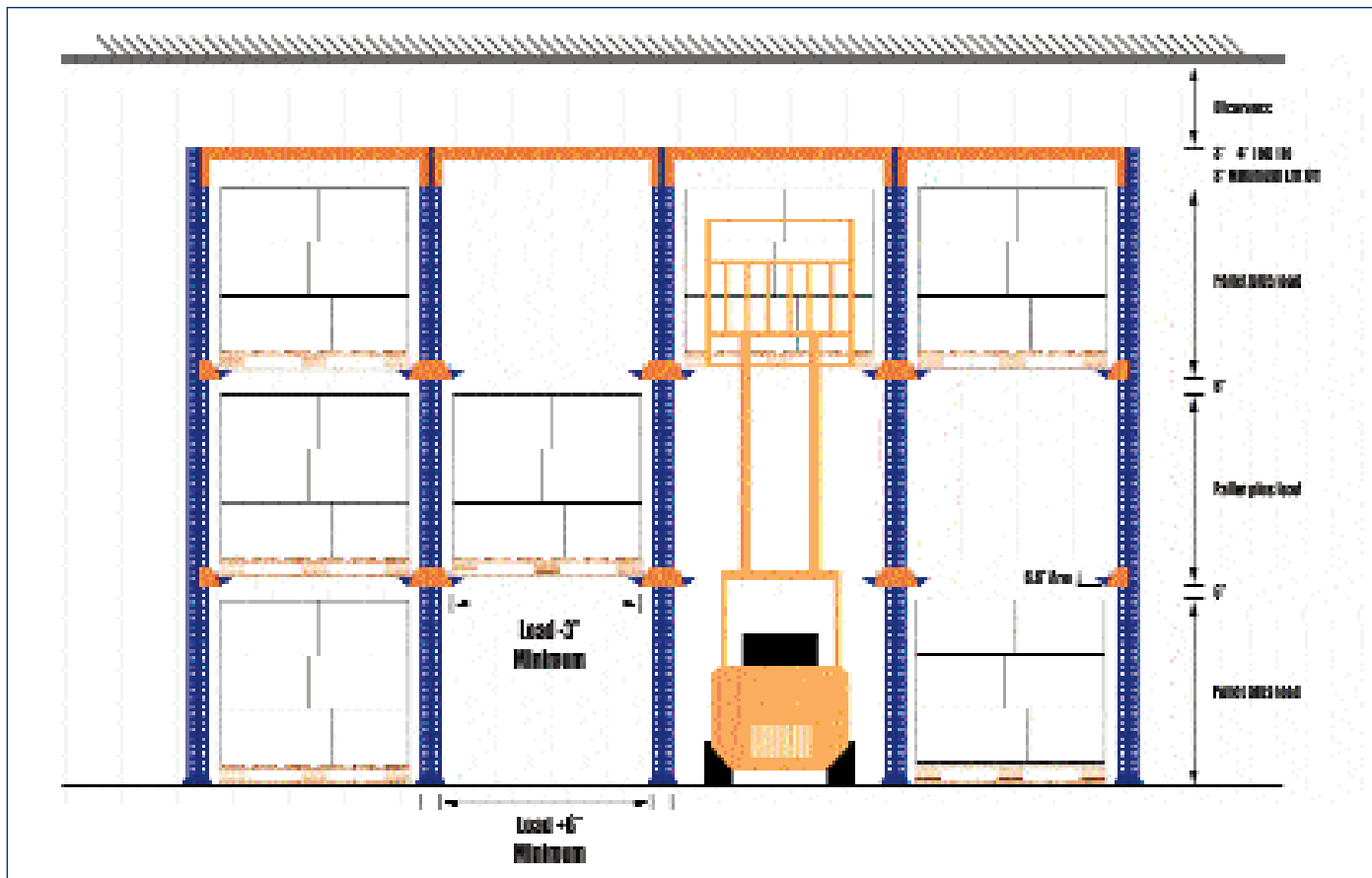


GP-5 Arm: six-pin bracket that joins the rails to the rack. Three arm lengths available to accommodate different pallet overhangs.

GP-5 Rail: pallet support rail whose shape enables pallets to be easily guided into position and be centered with a minimum loss spaces.



Top and Back Bracing: diagonals that brace a certain number of bays to increase stability.



www.interlakemecalux.com



Chicago: 391,000 sq.ft.



Sumter: 250,000 sq.ft.



Pontiac: 415,000 sq.ft.



Tijuana: 378,000 sq.ft.



Matamoros: 154,000 sq.ft.



Selective Pallet Racking



Drive-In Pallet Racking



Push Back System



Flow Systems



Wide Span Shelving



Metal Point Shelving



Structural Cantilever



Mezzanine's



Structural Rack

US CORPORATE HEADQUARTERS
1600 North 25th Avenue
Melrose Park, IL 60160
Phone (708) 344-9999
Fax (708) 343-9788

PONTIAC PLANT
701 Interlake Drive
Pontiac, IL 61764
Phone (815) 844-7191
Fax (815) 842-2327

SUMTER PLANT
1925 Corporate Way
Sumter, SC 29154
Phone (803) 481-3482
Fax (803) 481-6315

BROWNSVILLE WAREHOUSE
6333 Padre Island Hwy, Unit 4-A
Brownsville, TX USA 78520
Phone (956) 831-7070
Fax (956) 831-7076

RETAIL SERVICE SOLUTIONS
1200 Chastain Road, Suite 310
Kennesaw, GA 30144
Phone (866) 862-2565
Fax (770) 419-4078

SAN DIEGO WAREHOUSE
8607 Ave De La Fuente
San Diego, CA 92807
Phone (619) 671-0335
Fax (619) 671-0501

DALLAS WAREHOUSE
1520 Selene Drive, Suite 100
Carrollton, TX 75006
Phone (972) 245-3910
Fax (972) 245-3920

ROBOTICS DIVISION
804 Newtown Circle, Suite B
Lexington, KY 40511
Phone (859) 253-0879
Fax (859) 253-4782

TOLL FREE
1-877-MECALUX
1-877-632-2589



OFFICES WORLDWIDE

Argentina, Belgium, Brazil, Chile, Czech Republic, France, Germany, Italy, Mexico, Poland, Portugal, Slovakia, Spain, United Kingdom.

DISTRIBUTORS IN OVER 70 COUNTRIES

www.interlakemecalux.com
info@interlakemecalux.com



Fabricator ID #1761



Fabricator ID #FA-380



Fabricator ID #277
used with permission
of Clark County

